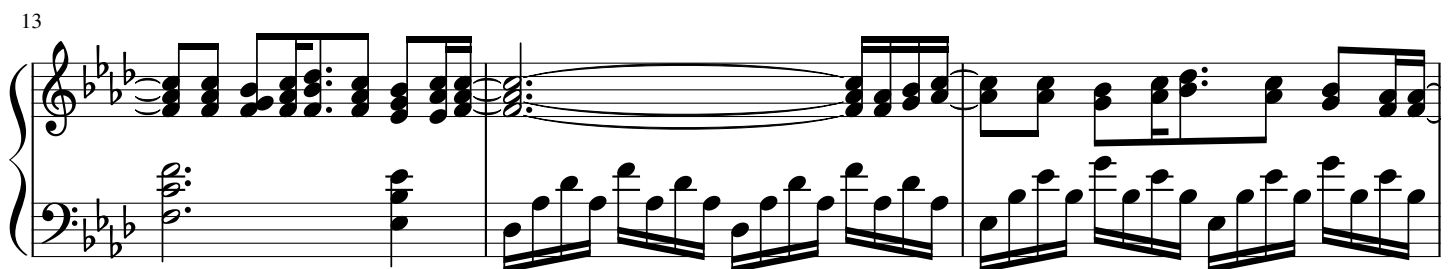
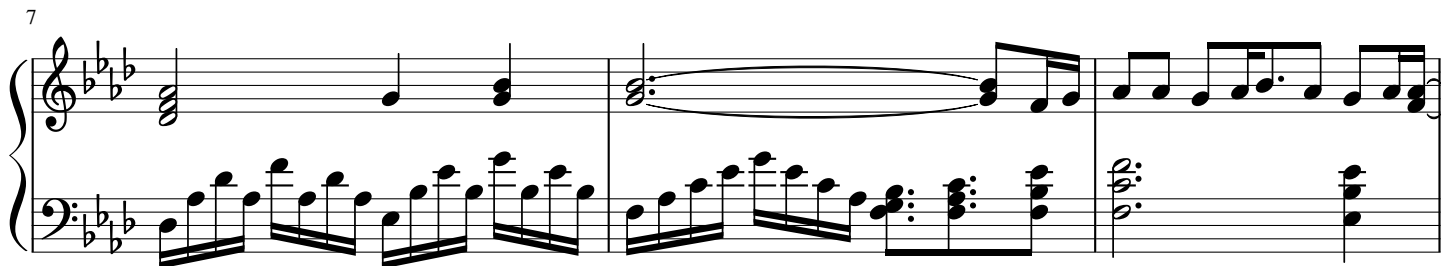
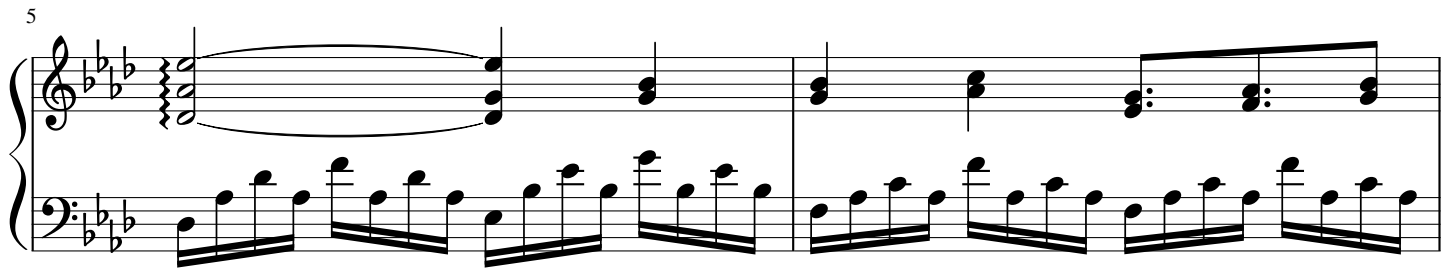
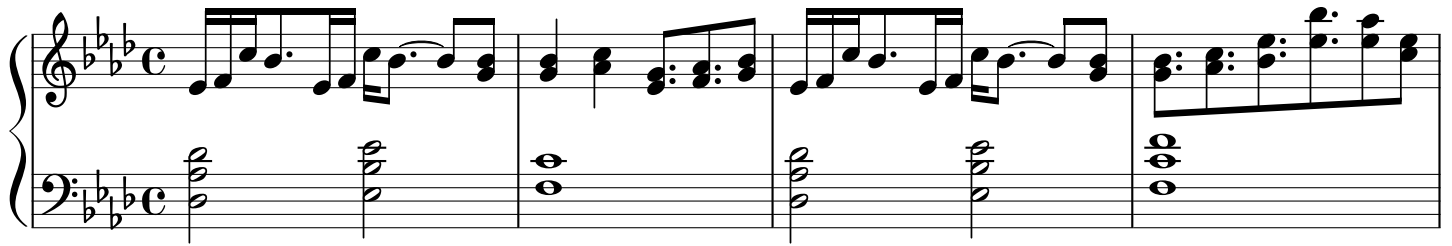


Silly go Round

.hack//Roots (Opening)

Yuki Kajiura

♩ = 80



16

A musical score for the song 'The Rose Tree'. The score is written for piano (p) and features a treble and bass clef. The key signature is three flats (B-flat, E-flat, A-flat), and the time signature is 3/4. The melody is in the treble clef, and the accompaniment is in the bass clef. The score consists of two staves, each with a grand staff (treble and bass clef). The first staff begins with a treble clef and a bass clef, followed by a key signature of three flats and a 3/4 time signature. The melody is written in the treble clef, and the accompaniment is in the bass clef. The second staff continues the melody and accompaniment. The score ends with a double bar line and a repeat sign.

18

A musical score for the song 'The Rose Tree'. It features a treble and bass staff. The treble staff has a key signature of three flats (B-flat, E-flat, A-flat) and a common time signature. The melody consists of eighth and quarter notes. The bass staff also has a key signature of three flats and a common time signature. It features a continuous eighth-note accompaniment pattern. The score is divided into two measures by a vertical bar line. The first measure contains the main melody and accompaniment. The second measure shows the melody continuing with a long note, while the accompaniment continues its pattern.

20

A musical score for the song 'The Rose Tree'. The score is written for piano (p) and features a treble and bass staff. The key signature is three flats (B-flat, E-flat, A-flat), and the time signature is 3/4. The melody is in the treble staff, and the accompaniment is in the bass staff. The score consists of two measures. The first measure shows a treble staff with a whole note chord (F4, A-flat4, C5) and a bass staff with a quarter note (F3) and an eighth note (A-flat3). The second measure shows a treble staff with a whole note chord (F4, A-flat4, C5) and a bass staff with a quarter note (F3) and an eighth note (A-flat3). The score ends with a double bar line.

22

[illegible]

24

[illegible]

26

A musical score for the song 'The Rose Tree'. The score is written for piano (p) and features a treble and bass staff. The key signature is three flats (B-flat, E-flat, A-flat), and the time signature is 3/4. The melody is in the treble staff, and the accompaniment is in the bass staff. The piece consists of two measures, each with a repeat sign. The melody is a simple, folk-like tune, and the accompaniment is a simple, rhythmic pattern.

